

**GIVE** **YOURSELF**  
**A BETTER**  
**TOMORROW**





# MBA (INTERNATIONAL)

**TWINNING PROGRAM WITH UK UNIVERSITIES**  
(With 2 years of work permit\*)

This course emphasizes the practical aspects of Managerial thinking about 'good' and 'best' management practices. The teaching styles and assessment methods require you to engage as an active participant in improving and developing your distinctive management skills, knowledge as well as soft skills.

## ELECTIVE MODULES

General Management | HR | Marketing | Finance | Operations | Supply Chain Management | IT | International Business

### UK University

First year in ISMS Campus and 2<sup>nd</sup> Year in a selected

Students studying in Universities in UK can work officially 20 Hrs Per Week to manage their living expenses.\*

**FEES:** 1st Year: 3.70 Lakhs, 2nd Year: 6000 to 9000 GBP (approx.)

# BBA (INTERNATIONAL)

**TWINNING PROGRAM WITH UK UNIVERSITIES**

Progression Program leading to BA (Hons.) in Management from selected UK Universities. Two Years in India & One Year in the UK with Option to progress to an MBA in the UK.

**FEES:** First 2 Years: 5.50 Lakhs, 3rd Year: 8000 to 10000 GBP in UK (approx.)

## UK UNIVERSITY



\*Partial List



# MBA PGP (TRIPLE CERTIFICATION PROGRAM) WITH INTERNATIONAL EXPOSURE

MBA (PUNE UNIVERSITY), POST GRADUATE PROGRAM (ISMS) & 1 YEAR INTERNATIONAL CERTIFICATION (BTEC Edexcel, UK)

The unique strength of this course is the clear emphasis on application and critical understanding. You will look at the integrative nature of management and the implications of background forces on organizations. You will learn how to make informed judgments using critical thinking, analysis, and critical appraisal, and you'll develop problem-solving and decision-making skills.

The course is one of its kind with an extraordinary combination of Master's Level International Certification and Traditional MBA degree from Pune University.

**FEES:** Total Fees: INR 570,000 | 1st Year Fees: INR 370,000 | 2nd Year Fees: INR 200,000

## International Exposure ( [OPTIONAL](#) )

**OPTION 1:** 3 weeks study tour at top UK universities.

Including - Stay in universities, 2 meals, Air ticket, industry visits, participation in cultural activities, sightseeing, a module of Strategic Management Certification.

**Fees:** 2.50 Lakhs (Approx.)

**OPTION 2:** 4 weeks of work internship in Mauritius

Including - Air tickets, Work Experience Letter, Accommodation, and meals.

**Fees:** 1.50 Lakhs (Approx.)

## Specialisations - Major

Marketing Management (MKT)

Financial Management (FIN)

Human Resources Management (HRM)

• Operations & Supply Chain Management (OSCM)

• Business Analytics (BA).

## Specialisations - MINOR

Rural & Agribusiness Management (RABM)

Pharma & Healthcare Management (PHM)

• Tourism & Hospitality Management (THM)

## VALUE ADDED PROGRAMS / CERTIFICATES

Six Sigma | SAP Introduction | ERP Introduction | MS Excel | Grooming & Development Classes | Certificate on Financial Segment | Certification on Digital Marketing | 3 Local Industry Visit | 1 Outstation Industry Visit | English through IELTS Module | 3 Layer Placement Opportunity (100% Placement Assurance)





# MBA IN AGRIBUSINESS

## WITH INTERNATIONAL INTERNSHIP

This course is designed keeping in mind the dynamics of agricultural activities and the application of business management in modern-day agriculture. The uniqueness of this course is that all the aspects of management taught in India would be put to practice in the Internship period. Students can either complete their internship in US for 10 months (1 full agricultural season), in Denmark, or in Australia.

Students will be provided with the option to choose from either US / Australia / Denmark, Student needs to at least give 2 (country) options for internship.

**FEES:** MBA with Internship – INR 9,50,000 (2 Years)

### FEES COVER

Airfare one way

Visa Fees

Health Insurance

Accommodation\*

# MBA SLM (DUAL CERTIFICATION PROGRAM)

This course is designed for those who wish to pursue a career in management. You will develop deep knowledge and understanding of the operation of business and organisations while you build up the personal and employability skills you will need in a career as a manager. The combination of MBA and Additional Certification of Strategic Leadership & Management is relevant for all the line managers and those aspiring for managerial positions. Corporate Social Responsibility, Business Leadership, Career Guidance and much more are part of the programme.

### Specialisations - MAJOR

- Marketing Management (MKT)
- Financial Management (FIN)
- Human Resources Management (HRM)
- Operations & Supply Chain Management (OSCM)
- Business Analytics (BA).

### Specialisations - MINOR

- Rural & Agribusiness Management (RABM)
- Pharma & Healthcare Management (PHM)
- Tourism & Hospitality Management (THM)

**FEES:** Total Fees: INR 390,000 | 1st Year Fees: INR 270,000 | 2nd Year Fees: INR 120,000





## ABOUT US

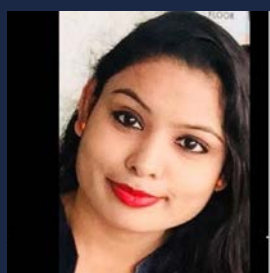
International School of Management Studies, ISMS is one of the premier B Schools in Pune. Start your journey with our International & National Level Management Programs and you will Graduate with right balance of Theoretical Knowledge & Practical Skills that employers are looking for.

ISMS is accredited by Pearson (Edexcel), United Kingdom and ISMS Sankalp Business School is approved by AICTE & Affiliated to Savitribai Phule Pune University.

## PLACEMENT



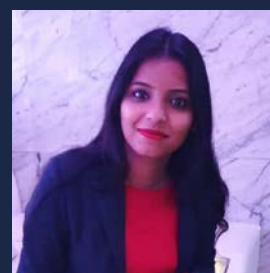
**Nirban Roy**  
Futurism Technologies



**Sapna Borale**  
Godrej Properties Pvt Ltd



**Saurabh Bendkhale**  
Glenmark Pharmaceuticals



**Shruti Shende**  
Kolte Patil



**Swapnil Bhagat**  
Bny Mellon Pvt. Ltd.



**Vivek Dev**  
Pin Click Properties



**Zaka Siddiqui**  
MagicBricks



**Md. Shamsuddin**  
Apollo Munich

## OUR TOP RECRUITERS



# STUDENTS SPEAK

I've been studying here at ISMS for the last 4 months and my experience so far has been exceptional. The courses offered are excellent as it is practical oriented and also provides International certification. Apart from that, unending presentations, workshops, case studies based on real life business scenarios and interaction with prominent industry guests etc. helps us to get a clear and broader insight about the corporate world. The faculties here has never neglected us in anyway, they make us feel like we are all part of a big family. They are very approachable and are always ready to support, motivate and push us in every possible so that we reach our potentials. I'm looking forward for a beautiful, fruitful and memorable journey here in ISMS.

Imnasenla  
Mokokchung, Nagaland  
MBA-PGP



Joining an MBA college after graduating from an Engineering college with no work experience is an intimidating thought. It brings about a wave of undulating emotions. I had high hopes colored by extreme fear which constantly kept me wondering if I would be able to make it. At International School of Management Studies, however much to my delight. It is truly unbelievable how the faculty members are 100% peerless, and even though they have to train a large bunch of students to go to the United Kingdom the next year as the course structure demands, they have an ever welcoming smile be it any time of the day. This college has boosted my confidence, enough to beat my stage fright in the first month of being in the college. I feel fortunate enough to have gotten the opportunity to study in this esteemed college, under the guidance of an army of teachers who radiate positivity day and night.

Debangana Chakraborty  
Mumbai, Maharashtra  
MBA INTERNATIONAL

The most beautiful journey of the life is the ISMS journey. Words fall short when I start to describe it. 'This definitely is the experience of a lifetime. One must understand that everything done at ISMS is to bring out the best in an individual. We have wonderful faculty who are very cooperative and who use the method of study required for UK education. This is a place where seniors and juniors students works together and every student is motivated to think beyond bookish knowledge. I have gained massive certainty, learning through the manner in which we are educated. The assignments for each student give numerous chances to the students to think abstract and relate the subject. I feel proud to be a part of ISMS family, they are with us all the steps and helping me to fulfill my dreams to study abroad.

MD Tabish Alam  
Kolkata, West Bengal  
MBA INTERNATIONAL



**DISCLAIMER\*:** All Information provided in the Brochure are correct and best to the knowledge of the Institute and for information purpose only. Courses / Programs offered by institute may change on the discretion of the institute in the interest of the students. All pictures and images shown in the brochure are for representation purposes only. We do not guarantee/assure VISA clearances and or work permit to any student as it is based on laws and policies of foreign country which can change any time without any prior notice.



For Admission Enquiry  
+91 7350 151515  
+91 8796 151515

For Admission Enquiry (Eastern Region)  
+91 9830 166294

**ISMS**  
**SBS**  
ISMS  
SANKALP  
BUSINESS  
SCHOOL  
PUNE

✉ info@ismspune.in  
🌐 www.ismspune.in

**Punawale Campus**  
S.No 52/53, Jhambe Road,  
Mumbai Bangalore Highway  
Punawale, Pune - 411033

**Ambegaon Campus**  
S. No. 9/1/1,  
Wadgaon Budruk,  
Ambegaon, Pune - 411041